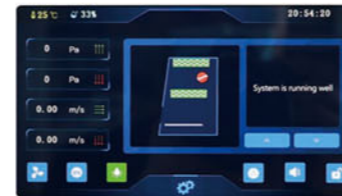




EC Series Class II A2 Biological Safety Cabinet



Color Touch Screen
Touch operation, real-time and clearer display of various values and appointment timing function.

ADVANTAGE

- 7-inch touch color display screen: touch operation, real-time more clear and dynamic display of various values of the safety cabinet, and has the function of appointment timing.
- Power-on password can be set to prevent unrelated personnel from mis-operation.
- Automatically adjust the wind speed.
- With power-off memory function, the state before power-off is restored after power-on, and there is a visual prompt alarm.
- The integrated design of the operation area makes it easy to disassemble and clean.
- The working area is equipped with a wind speed sensor to detect the wind speed in real and real time.
- It can be used manually or electrically, and the front window can be closed by pulling down the glass door when the power is off.
- The cabinet is separated from the base. The height of the adjustable base can be customized.
- Interlocking function: UV lamp and front window; UV lamp and fan, LED lamp; fan and front window.
- It has the function of appointment timing, which can automatically set the time of starting and shutting down the safety cabinet and the running time of ultraviolet lamps, fans and sockets.
- The front window closes the double trigger signal, so that the sterilization and disinfection function of the ultraviolet lamp is normally turned on.
- The negative pressure air duct is equipped with a foreign matter filtering structure to prevent foreign matter such as paper scraps from entering the fan system and affecting the normal operation of the product.
- The front window glass has a one-key lift function.

TECHNICAL PARAMETERS

Model	EA2-2F
External Size (W*D*H)	700*700*2000mm
Internal Size (W*D*H)	600*500*540mm
Tested Opening	Safety height 200mm
Max Opening	360mm
Inflow Velocity	0.53±0.025m/s
Downflow Velocity	0.33±0.025m/s
ULPA Filter	Two, 99.9995% efficiency at 0.12µm, filter life indicator
Front Window	Manual and electric. Tempered glass≥5mm. Anti UV
Noise	≤65 dB
UV Lamp	15W*1 UV timer, UV life indicator, emission of 253.7 nanometers for most efficient decontamination
LED Lamp	8W*2
Illumination	≥1000Lux
Consumption	≤500W
Waterproof Socket	Two, total load of two sockets: 500W
Display	LCD display: exhaust filter and downflow filter pressure, filter and UV lamp working time, inflow and downflow velocity, filter life, humidity and temperature, system working time etc.
Control System	70% air recirculation, 30% air exhaust
Visual and Audio Alarm	Filter replacement, window over height, abnormal air flow velocity, high filter pressure, abnormal power failure
Material	Work Zone: 304 stainless steel Main Body: Cold-rolled steel with anti-bacteria powder coating
Work Surface Height	750mm with base stand
Power Supply	AC220V 50/60Hz; 110V 60Hz
Standard Accessory	Cabinet*1, Base stand*1, LED lamp*2, UV lamp*2, Drain ball valve*1, Waterproof Socket*2, EC Fan, Foot switch, Remote control
Optional Accessory	Water and gas tap, Electric height adjustable base stand, Armrest
Package Size (W*D*H)	Carton: 820*910*1500mm
Gross Weight	170kg



Remote Control
All functions can be realized with it, making the operation much easier and more convenient.



Foot Switch
Adjust front window height by foot during experiment, to avoid airflow turbulence caused by arm movement.



Wind Speed Sensor & EC Fan



Footmaster Caster
Universal caster with brake and leveling feet.



Stepper Motor and Handle
The front window can be controlled manually or electrically



Cabinet Support Block
Easy to lift, prevent hand pressing



Iron hook support rod for panel support



UV Lamp
Emission of 253.7 nanometers for most efficient decontamination.